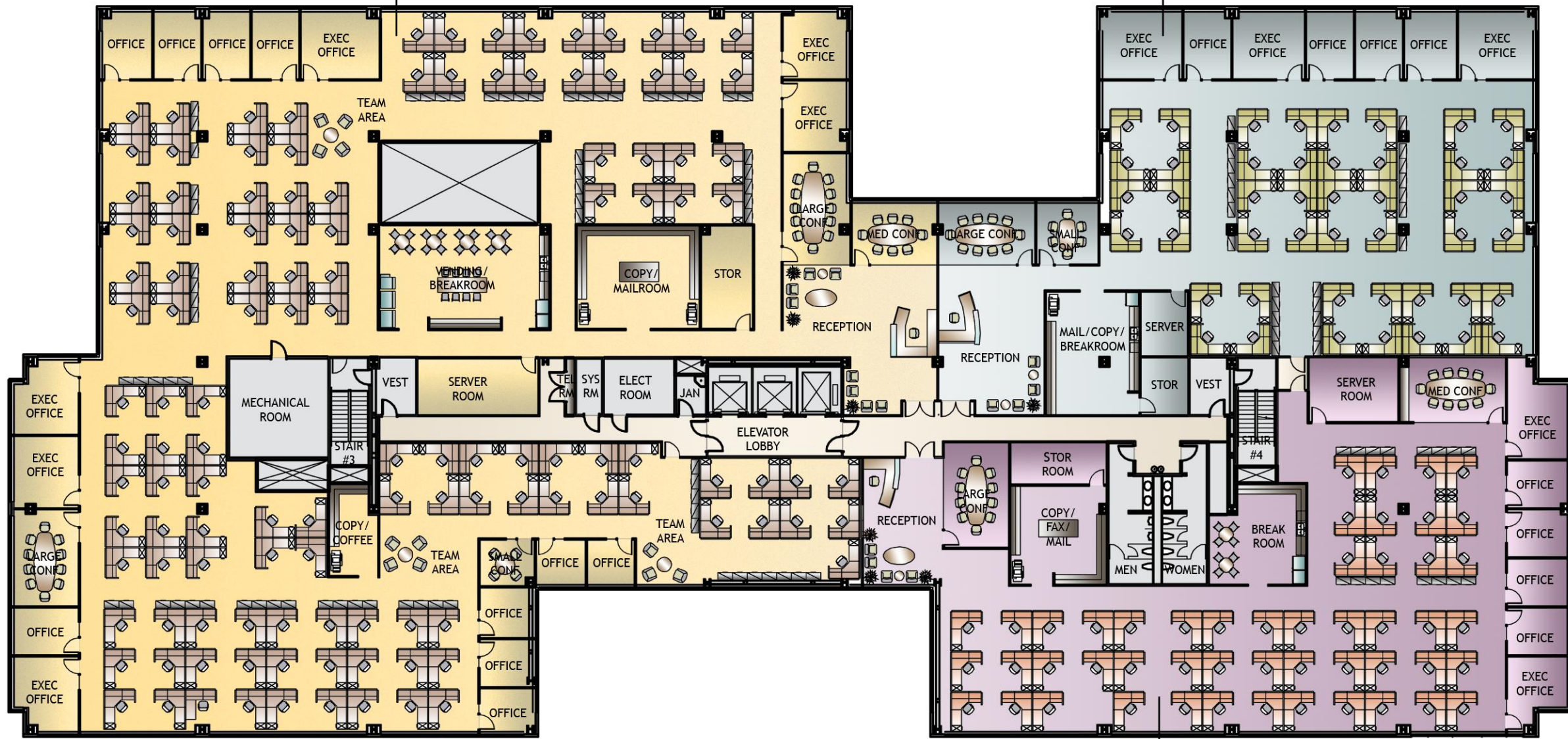


SUITE C: 24,010 RSF

SUITE A: 9,531 RSF



SUITE B: 9,977 RSF

SUITE A: HEADCOUNT SUMMARY

3	EXECUTIVE OFFICE (200SF)
4	STANDARD OFFICE (130SF)
46	6X8 WORKSTATIONS
1	RECEPTION
54	TOTAL STAFF

1	LARGE CONFERENCE (300SF)
1	SMALL CONFERENCE (150SF)

177 RSF/PERSON

SUITE B: HEADCOUNT SUMMARY

2	EXECUTIVE OFFICE (200SF)
4	STANDARD OFFICE (130SF)
51	6X8 WORKSTATIONS
1	RECEPTION
58	TOTAL STAFF

2	LARGE CONFERENCE (300SF)
---	--------------------------

173 RSF/PERSON

SUITE C: HEADCOUNT SUMMARY

6	EXECUTIVE OFFICE (200SF)
10	STANDARD OFFICE (130SF)
122	6X8 WORKSTATIONS
1	RECEPTION
139	TOTAL STAFF

2	LARGE CONFERENCE (300SF)
1	MEDIUM CONFERENCE (200SF)
1	SMALL CONFERENCE (150SF)

173 RSF/PERSON

